

# Palm Island Voice



**FREE!**

**Issue 429**

**21 July 2025**



PLEASE note there may be images of deceased persons within this publication.



## THE NEXT GENERATION: STRENGTH, VISION & LEGACY

**6-13 JULY 2025**



*Pic by Leah Dabea*



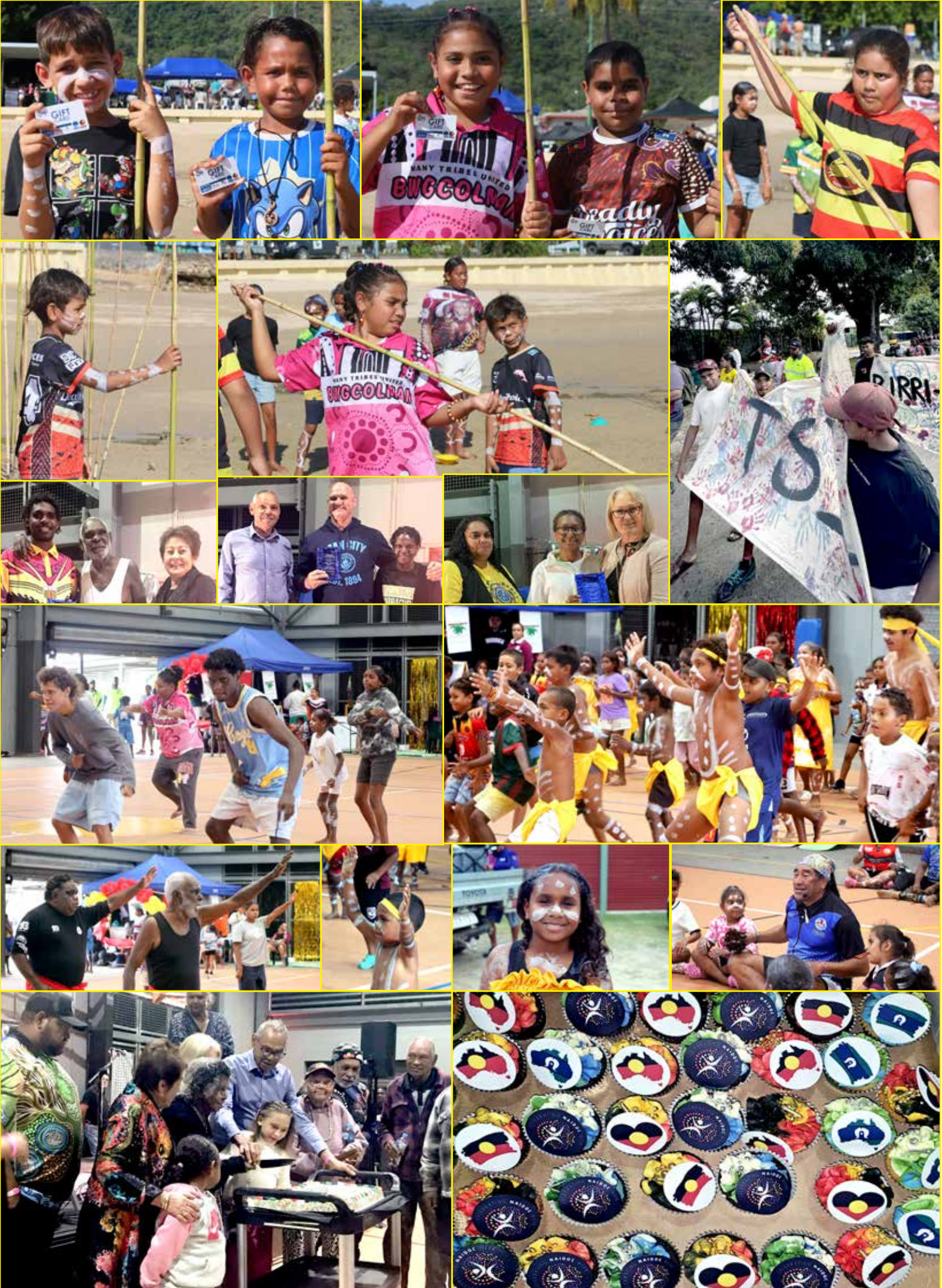


Pics on  
pages  
2, 3 &  
4 by  
Riana  
Mabo  
(PIASC)

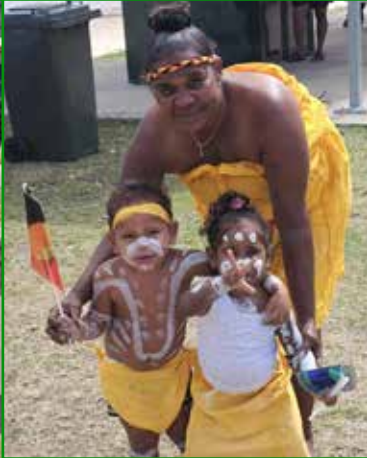












Pics on this page  
by Leah Dabea





# Images thanks to the MyLeague app

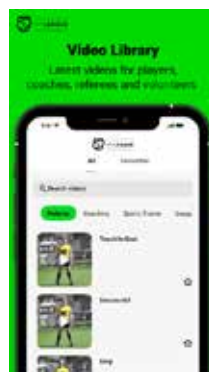
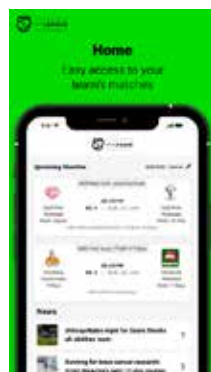
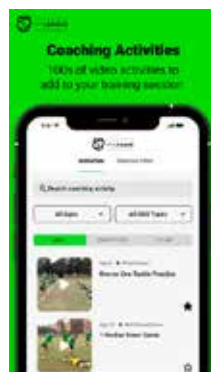


Palm Island

DISTRICT RUGBY LEAGUE 2025

SATURDAY 12<sup>TH</sup> JULY  
SPORTS COMPLEX FARM ROAD

UPDATE



## Upcoming Matches

Add/Edit Teams



Butler Bay  
Bulls Open  
Mens

12

FULL TIME

28



Mundy Bay  
Warriors

Palm Island Rugby League, PALM ISLAND



Jets Palm  
Island

0

FULL TIME

44



Palm Island  
Skipjacks

Palm Island Rugby League, PALM ISLAND

## Palm Island Open mens

Draw

Ladder

Stats

TRIES

TOTAL POINTS

1

John BAIRA  
Palm Island Skipjacks

10

2

Ivan BARRY-HERO  
Butler Bay Bulls Open Mens

8

2

Joseph Ross  
Mundy Bay Warriors

8

3

Tylyn KERR  
Palm Island Skipjacks

6

## Palm Island Open mens

Draw

Ladder

Stats

TRIES

TOTAL POINTS

1

Ivan BARRY-HERO  
Butler Bay Bulls Open Mens

2

2

Issac BULSEY  
Palm Island Skipjacks

1

2

Benjamin KENNEDY  
Palm Island Skipjacks

1

2

Ezra LANGLO  
Palm Island Skipjacks

1

2

Gary PEARSON  
Palm Island Skipjacks

1



SATURDAY 19<sup>TH</sup> JULY  
ROUND 2



GAME 1 - 4 PM

VS



INTERVAL



GAME 2 - 6 PM

VS



The MyLeague app is available on most devices.  
More next issue!



group programs

# Groups that get YOU!

learn. grow. belong.

Learn new skills, grow confidence and find a place you belong in our welcoming group programs.

Join us for a activities like  
arts and craft, fishing, back to country, bingo,  
movie days and much more...



## Mahie Club!

Monday - Friday | 7am - 9am

Start your day with a meal, cuppa and a yarn!

**Come and meet our friendly team today!**



Not on the NDIS? Support is available.

**CONNECT WITH US**



SCAN CODE

# selectability

mental wellbeing and suicide prevention

**Palm Island Mental Health Hub**

Joyce Palmer Home and Community Care Centre  
(HACC) Beach Road

☎ 0448 133 445

🌐 [selectability.com.au](https://selectability.com.au)





### Palm Island Early Years Reference Group



Invites the Palm Island Community to  
**National Indigenous Children's Day**



**When:** Monday 4 August, 2025, Pre Kindy to year 3  
11:30 am to 1:00pm  
**Where:** Bwgcolman Community School, outdoor space, under the big tree.  
**What:** Activities, games, and Gift bags from Peak Body for Indigenous Organisations



#### Enquiries

**Belinda Lloyd-Pugh BCS**

Phone: 0467615221 email: [blkem0@eq.edu.au](mailto:blkem0@eq.edu.au)

Or any member of the **Early Years Reference Group**

Or **Ray Armit**: Contact Details below

**Ray Armit**  
0411495654

[ramit@picc.com.au](mailto:ramit@picc.com.au)



**pp positive partnerships**  
Working together to support autistic school-aged students

## Free Yarning and Sharing Workshop

First Nations Families  
Supporting Diverse  
Learners

**Palm Island  
QLD**



Parents, carers, grandparents, family  
and community are invited to join  
us for a day of yarning and sharing  
stories.



**Wednesday 6th August 2025**  
9.30am - 2.30pm



Children and Family Centre  
(blue building),  
Beach Road, Palm Island  
QLD 4816

**Refreshments will be provided**

[www.positivepartnerships.com.au](http://www.positivepartnerships.com.au)

### During the workshop you will learn about:

- The diversity of autism
- Sensory processing
- Understanding behaviour
- Working together with your child's school.



*Positive Partnerships acknowledges the Traditional Custodians of this land and pays respect to the Elders both past and present and their continuation of cultural, spiritual and educational practices*

RSVP is essential for catering purposes. To register and book, contact:

**Community contact: Ray Armit**

☎ 0411 495 654

**Skye Ceminio**

☎ 0439 462 368

✉ [sceminio@positivepartnerships.com.au](mailto:sceminio@positivepartnerships.com.au)

Positive Partnerships is funded by the Australian Government Department of Education. The views expressed within this program do not necessarily represent the views of the Australian Government or the Australian Government Department of Education.

## Autistic Spectrum Disorder Yarning and Sharing Workshop

Information about Palm Island Aboriginal Shire Council services and activities, including ramp and jetty closures, water supply issues, vet visits and meetings, etc, is regularly updated on our Council's Facebook page: <https://www.facebook.com/PalmCouncil>

**THE NEXT *Palm Island Voice* DEADLINE\***  
**(Issue 430\*) will be Thursday 31 July**  
**for publication on Monday 4 August**



The ***Palm Island Voice*** is published \*weekly if we have paid advertising, or otherwise fortnightly by the Palm Island Aboriginal Shire Council. For advertising rates and/or more information contact the Editor on 0419 656 277 or at [howeschowes@gmail.com](mailto:howeschowes@gmail.com) Members of the Palm Island community and local organisations are welcome to submit birthdays, community information, pics, yarns and letters to the Editor, Christine Howes. You can also follow us on Facebook! We have 2,900 'likes' and more than 3,000 followers! The ***Palm Island Voice*** is free and online at <http://www.chowes.com.au>

**Operating Hours for Palm Island Council are Monday–Friday 8am – 5pm**

**If you have any questions please contact Reception on 4770 1177 or 4770 0200**

**Palm Island Aboriginal Shire Council has 5,400 'followers' on Facebook!!!**